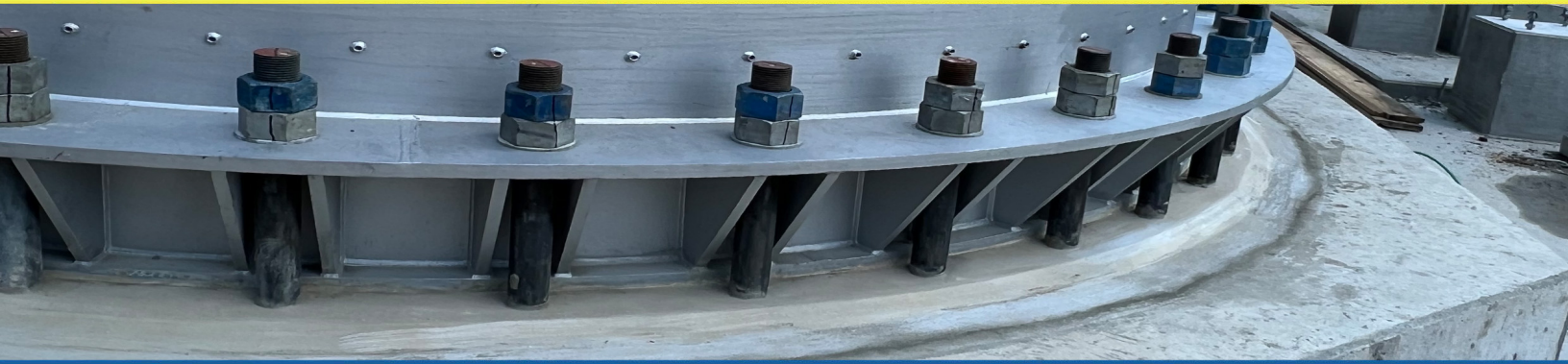




FasTrac HP Grout

HIGH-STRENGTH NON-SHRINK GROUT



Technical Data Sheet

PRODUCT DESCRIPTION

FasTrac HP Grout is a high strength, fluid consistency, non-shrink, cement-based grout for static and light dynamic equipment and machinery applications. FasTrac HP Grout can be placed at various consistencies, from dry-pack to fluid and provides excellent 8 and 24 hour strengths. FasTrac HP Grout meets the performance requirements of ASTM C 1107 and CRD C 621 specifications for non-shrink grout and may be placed up to 4 inches thick without the use of aggregate extension. FasTrac HP Grout may be used in service temperatures up to 400° F (204°C).

APPLICATIONS

- Pumps
- Turbines
- Tanks and Vessels
- Generators
- High Load Applications
- Anchors and Dowels

FEATURES

- Meets ASTM C 1107
- High early and Ultimate Strengths
- Nonmetallic
- Fluid to dry pack consistencies
- Pumpable
- Can be Extended for Deep Placements

SURFACE PREPARATION

All concrete surfaces shall be dimensionally sound, clean, and roughened mechanically to ensure the best bond between grout and concrete. Roughen concrete surfaces to a minimum CSP 6 to CSP 10 in accordance with International Concrete Repair Institute 310.2R Selecting and Specifying Concrete Surface Preparation for Sealers, Coatings, Polymer Concretes, and Concrete Repair guidelines. Remove all dust, debris, and other contaminants with oil-free compressed air. Once clean, presoak concrete surfaces with potable water for a minimum of 8 and up to 24 hours prior to grout placement. Concrete surfaces should be saturated surface dry (SSD) – damp but without any standing water right before grout placement. Best placement results are obtained when concrete substrate surfaces are between 50° F and 80° F (10°C and 26.7° C).

FORMWORK

All formwork must be rigidly secured and watertight. Caulk and seal all internal formwork joints. Formwork should extend a minimum of 1 inch above the top of baseplate or structural member being grouted. A form release agent (form oil, wax) should be applied to all grout contact surfaces to ensure easy removal of formwork.

MIXING

Water content may be varied depending upon consistency required. For fluid consistency, use approximately 1 to 1.156 gallons of water (3.78 liters to 4.36 liters) per 50 lb. (22.7 kg.) of grout. For multiple bag mixes, use only a mortar mixer (not a cement mixer) for mixing. Start by adding the specified amount of water followed by the grout. Mix for 3 to 4 minutes. Adjust consistency as necessary but do not exceed maximum water content. For single bag mixes a five-gallon pail and drill and paddle may be used. Add water to bucket followed by grout and start mixing while adding grout. Use immediately after mixing. For elevated temperature service conditions, it is recommended that a flowable consistency be used for best results.



 www.fastracproducts.com

 816-380-4747

 sales@fastracproducts.com

 Lee's Summit, MO 64081



FasTrac HP Grout

HIGH-STRENGTH NON-SHRINK GROUT

INSTALLATION

Pour or pump grout from one side to the other. Do not pour or pump grout from both sides simultaneously. Use a headbox to facilitate grout flow in tighter clearance or large footprint applications. For placements thicker than 4 inches, add clean dry coarse aggregate at the rate of 25% to 50% by weight during mixing process.

CURING

Wet cure grout for three days continuously using wet burlap and plastic sheeting, burlene or similar materials that will maintain moisture and not dry out. A curing compound meeting the requirements of ASTM C 309 / 1315 may be used in lieu of wet curing. A 24-hour air dry must follow any wet cure for elevated temperature service conditions.

PACKAGING AND YIELD

50 lb. bag (22.7kg.) bag yields 0.44 cubic feet (0.012 cubic meters) at a fluid consistency. Also available in 3000 lb. (1363 kg.) bulk sacks. Yield will be lower at reduced water contents.

SHELF LIFE AND STORAGE

Shelf Life: 1 year from date of manufacture Storage Temperature: 40° F to 90° F (4.4° C to 32° C). Best results obtained when material is pre-conditioned to 55° F and 90° F (12.7° C and 32° C).

TYPICAL PROPERTIES at 75° F (23.8° C)

TEST METHOD	RESULTS			
		PLASTIC	FLOWABLE	FLUID
ASTM C109 COMPRESSIVE STRENGTH				
	8 Hrs	9,000 psi (62.1 MPa)	8,000 psi (55.2 MPa)	7,500 psi (51.7 MPa)
	1 Day	10,000 psi (68.9 MPa)	9,500 psi (65.5 MPa)	8,500 psi (58.6 MPa)
	7 Days	12,500 psi (86.2 MPa)	12,000 psi (82.8 MPa)	10,500 psi (72.4 MPa)
	28 Days	13,500 psi (93.1 MPa)	13,000 psi (89.7 MPa)	12,000 psi (82.8 MPa)
ASTM C78 FLEXURAL STRENGTH				
	3 Days	1,000 psi (6.9 MPa)		
	28 Days	1,400 psi (9.7 MPa)		
ASTM C266 SET TIME				
		Initial: 50 mins Final: 70 mins		
ASTM C469 STATIC MODULUS OF ELASTICITY				
	3 Days	2.64 X 10 ⁶ psi (18,206 MPa)		
	28 Days	3.0 x 10 ⁶ psi (20,689 MPa)		

HEALTH AND SAFETY INFORMATION

This product contains Portland cement, silica sand and respirable silica. Respirable silica is a suspected human carcinogen by NTP and IARC. Use proper PPE when working with this material, including eye protection, gloves and NIOSH / MSHA approved dust masks or respiratory protection as required to prevent inhalation and accidental ingestion. Read SDS thoroughly before use. Proposition 65 - This product contains material listed by the state of California as known to cause birth defects or other reproductive harm.

LIMITED WARRANTY

LIMITED WARRANTY All information provided by Cornerstone Construction Material LLC (CCM) concerning CCM products, including but not limited to, any recommendations and advice relating to the application and use of CCM products, is given in good faith based on CCM's current experience and knowledge of its products when properly stored, handled, and applied under normal conditions in accordance with CCM's instructions. In practice, the differences in materials, substrates, storage and handling conditions, actual site conditions and other factors outside of CCM's control are such that CCM assumes no liability for the provision of such information, advice, recommendations, or instructions related to its products, nor shall any legal relationship be created by or arise from the provision of such information, advice, recommendations, or instructions related to its products. The user of the CCM product(s) must test the product(s) for suitability for the intended application and purpose before proceeding with the full application of the product(s). CCM reserves the right to change the properties of its products without notice. All sales of CCM product(s) are subject to its current terms and conditions of sale. Prior to each use of any CCM product, the user must always read and follow the warnings and instructions on the product's most current Technical Data Sheet, product label and Safety Data Sheet which are available at www.ccmaterial.com. Nothing contained in any CCM materials relieves the user of the obligation to read and follow the warnings and instructions for each CCM product as set forth in the current Technical Data Sheet, product label and Safety Data Sheet prior to product use. CCM warrants this product for one year from the date of installation to be free from manufacturing defects and to meet the technical properties on the current Technical Data Sheet when used in accordance with the written instructions. User determines suitability of product for intended use and assumes all risks. The buyer's sole remedy shall be limited to the purchase price or replacement of product exclusive of labor or cost of labor. NO OTHER WARRANTIES EXPRESS OR IMPLIED SHALL APPLY INCLUDING ANY WARRANTY OF MERCHANTABILITY OR FITNESS FOR A PARTICULAR PURPOSE. CCM SHALL NOT BE LIABLE UNDER ANY LEGAL THEORY FOR SPECIAL OR CONSEQUENTIAL DAMAGES. CCM SHALL NOT BE RESPONSIBLE FOR THE USE OF THIS PRODUCT IN A MANNER TO INFRINGE ON ANY PATENT OR ANY OTHER INTELLECTUAL PROPERTY RIGHTS HELD BY OTHERS.

Every reasonable effort is made to apply exacting standards both in the manufacture of "FasTrac HP Grout" product and in the information which we issue concerning these products and their use. We warrant our products to be good quality and will replace or, at our election, refund the purchase price of any products proved defective. Satisfactory results depend not only on quality products, but also upon many factors beyond our control. Therefore, except for such replacement or refund, Cornerstone Construction Material LLC (CCM) makes no warranty or guarantee, express or implied, including warranties of fitness for a particular purpose or merchantability, respecting its products, and Cornerstone Construction Material LLC (CCM) shall have no other liability with respect thereto. Any claim regarding a product defect must be received in writing within one year of the date of shipment. No claim will be considered without such written notice or after the specified time interval. The User shall determine the suitability of the products for the intended use and assume all risks and liability in connection therewith. Any authorized change in the printed recommendations concerning the use of our products must bear the signature of the Cornerstone Construction Material LLC (CCM) technical manager.

5-1-2026_SR